



QGIS – 2.14.2 – April 2016

## Visualizing levels of sea rise

### Plugin *QGIS2TreeJS*

This is a brief tutorial to visualization of sea level rise in a Webpage

*Note that pixels on land can be shown as flooded, even though they are not. The result is only for areas in direct contact with the sea.*

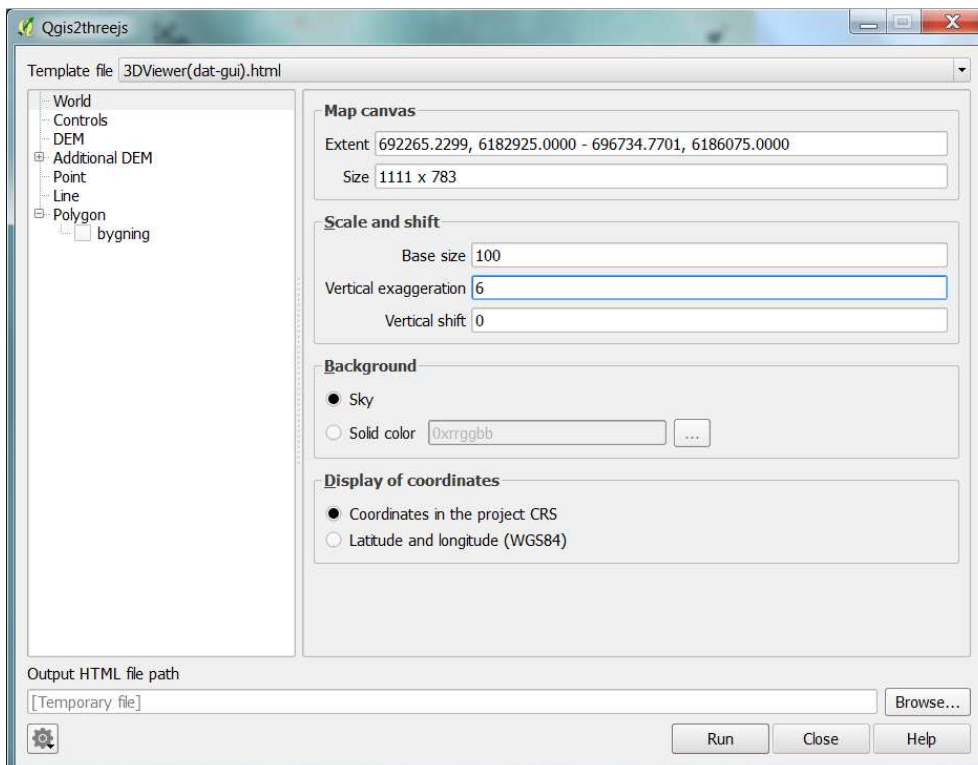
*Before stating this tutorial, install the plugin **QGIS2TreeJS***

Open the project **sealevel.qgs**

Click **WEB>QGIS2ThreeJS**

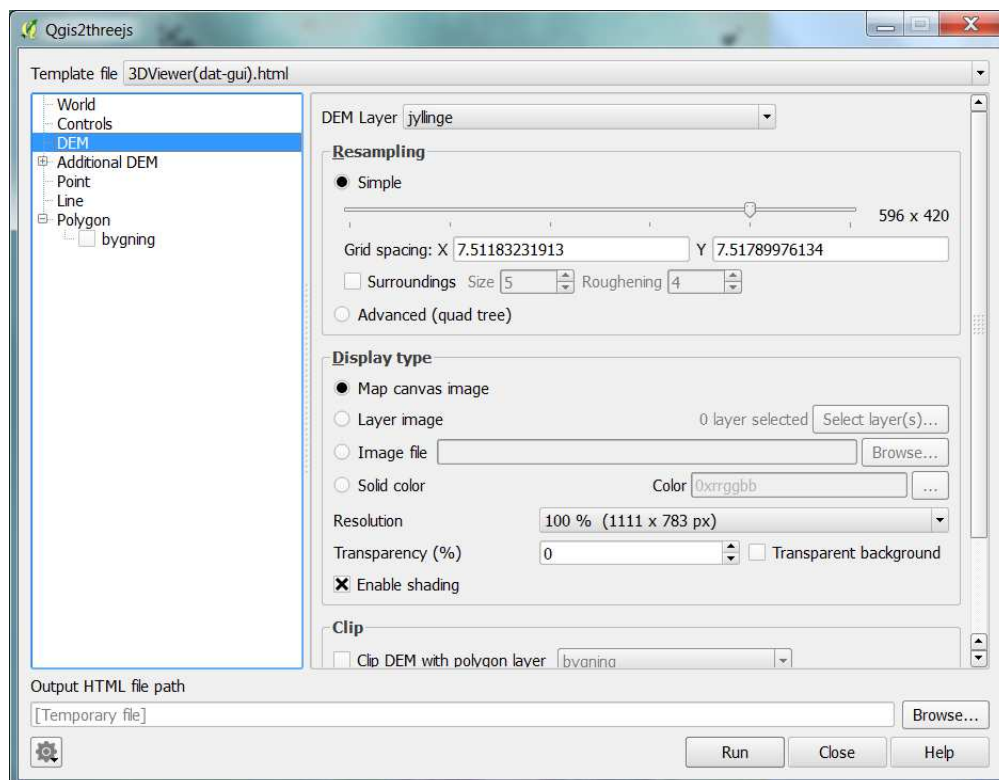
Click on **World**

Change **Vertical exaggeration** to 6



Click **DEM** check the DEM layer is **jyllinge**

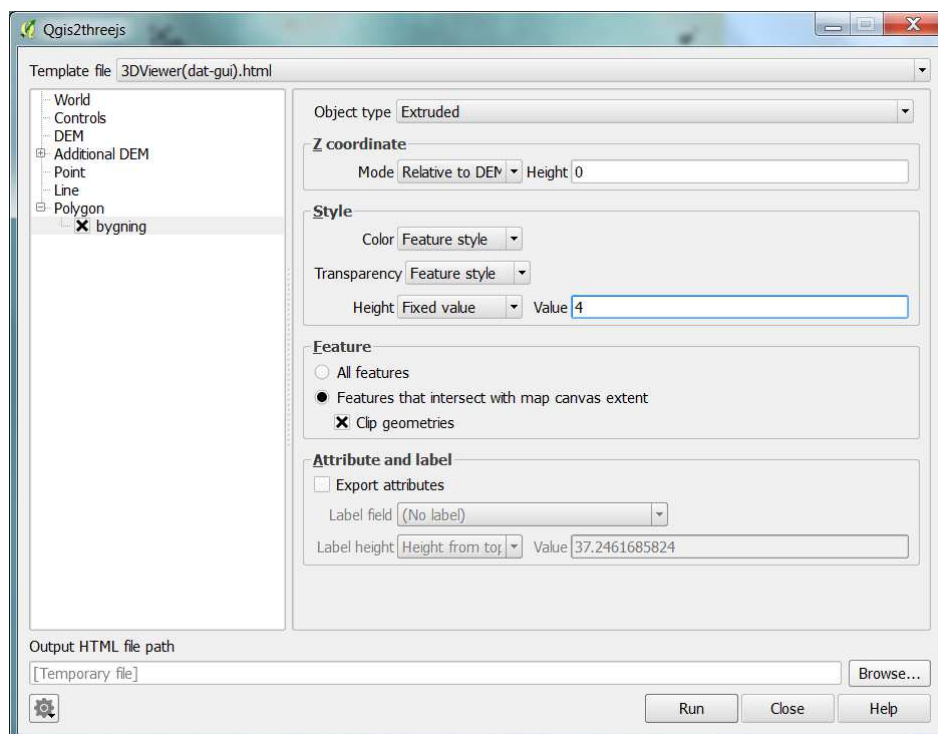
Drag the **Resampling** slider so the Grid spacing will be about 7



Click **Polygon>bygning**

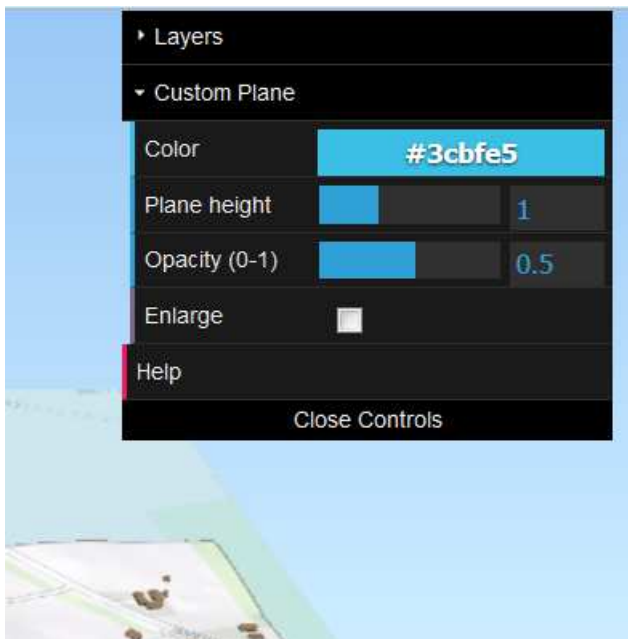
In **Height** change the **Value** to **4**. Most of the building in this area is 4 m in height.

The height is only for the visualizing.



Create a temporary HTML file . Click **Run**

In the browser zooms ind på området.



Click **Custom Plane**

Change to a blue color.

In **Plane height** write **0**

Drag **Opacity** to **0.5**

Change **Plane height** to **1**