



Rastecalculator

Find pixels with fixed values

In connection to calculate sea level, we use the **Rastecalculator** to calculate values on each single pixel. Data is the Terrain model (DTM) from the virtual file **jyllinge.vrt**

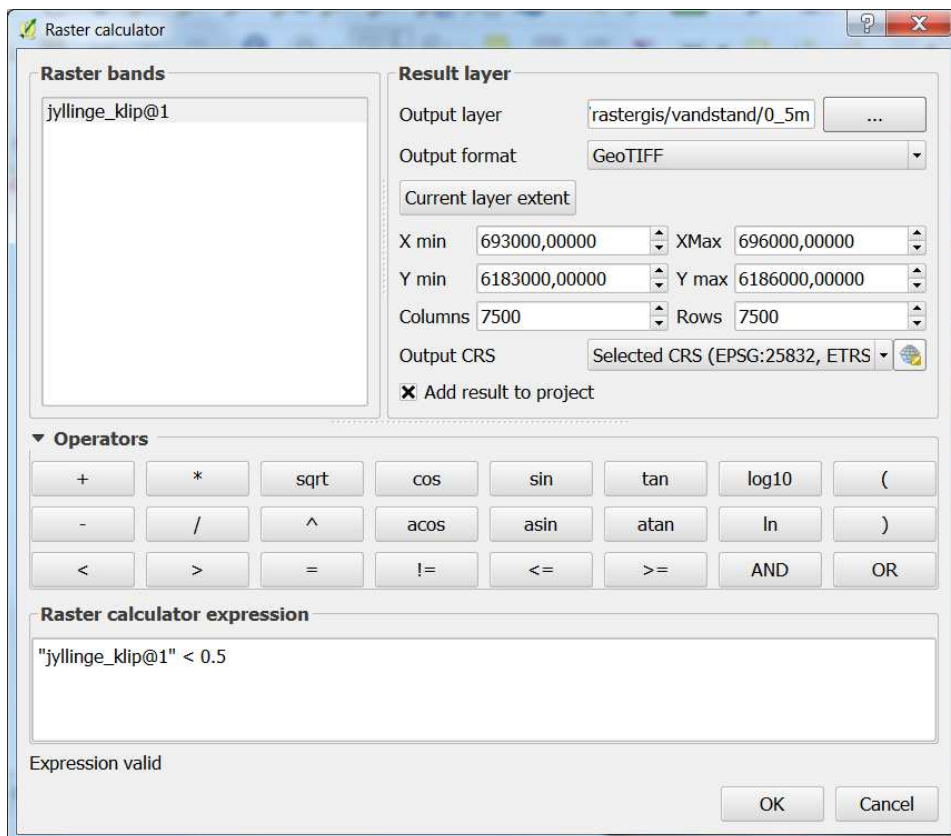
Each pixel is 0,4 *0,4 m and have a value in band 1 which is the Z-value (height above sealevel measured in meter)

In this tutorial the task is to find pixel values < 0.5 m, <1.0 m <1.5 and < 2.0 m.

With a query **'Find pixel < 0,5'** the result will be a new layer with values in band 1 either true/false represented as 1 or

Open the virtual raster file **jyllinge.vrt**

Click **Raster>Rastecalculator**



Klik på



Create folder
rastecalculator

Write filename
0_5m

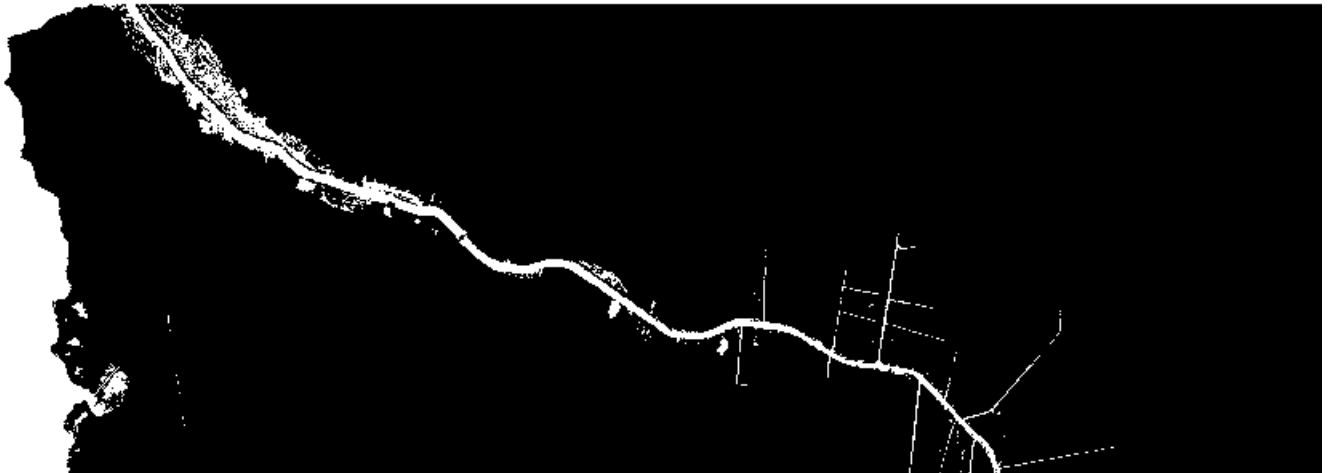
Double click at **Jyllinge_klip@1 (values from band 1)**

write **< 0.5**

Click **OK**

The result is a black/white raster file with the name 0_5m

Pixels has either value 0 or 1



Repeat calculations for values 1, 1.5 and 2

Gentag disse beregninger for værdier 1, 1,5 og 2.

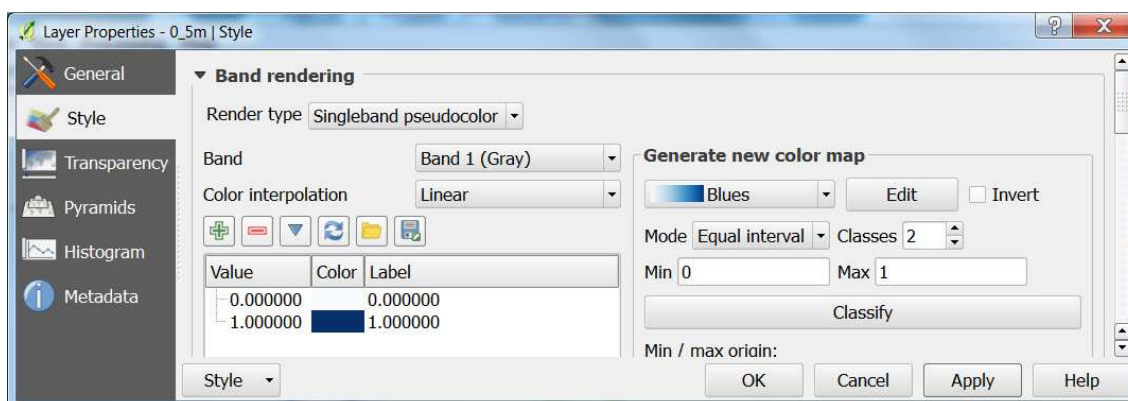
Colorize pixels to blue fore values 1.

Double click at the first layer.

Click at **Style**

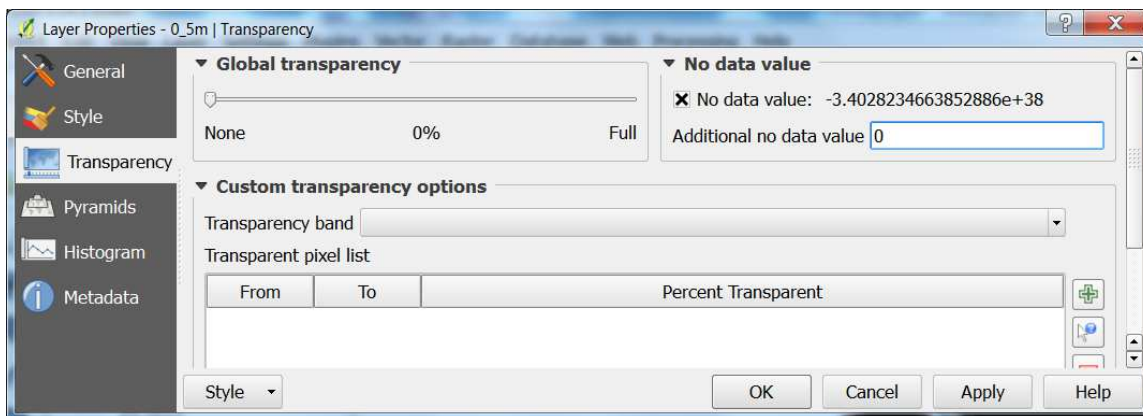
Change to **Singleband Pseudocolor**

Fill out the dialog as shown in the figure



Rastecalculator - **In connection to calculate sea level**, we use the Rastecalculator to calculate values on each single pixel. Data is the Terrain model (DTM) from the virtual file jyllinge.vrt /

Click at **Transparency**



In **Additional no data value** type **0**

Click **OK**

Copy the style to all the other calculated layers

Right click at the first colored layer.

Click **Styles>Copy Style**

Click the next layer

Right click

Click **Styles>Paste Style**

Set up a Print Composer with all 4 layer at one page

Rastecalculator - In connection to calculate sea level, we use the Rastecalculator to calculate values on each single pixel. Data is the Terrain model (DTM) from the virtual file jyllinge.vrt /